

Technical Data Sheet

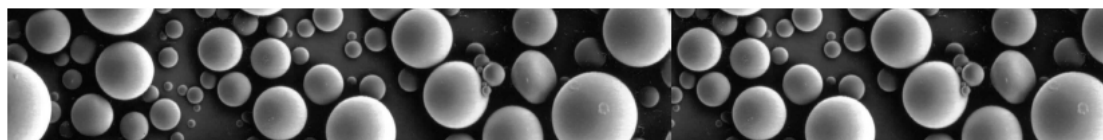
Product Name: Cenospheres

Chemical Composition:		Typical Cenosphere Properties:	
SiO ₂ :	55-65%	Specific Gravity :	0.60-0.85g/cc
Al ₂ O ₃ :	26-35%	Bulk Density :	0.35-0.47g/cc
Fe ₂ O ₃ :	0.2-1%	Hardness :	5-6Moh Scale
CaO:	0.2-0.6%	Shell Thickness :	5-10% Sphere Diameter
MgO:	1-2%	Crush Strength :	120-260kg/cm ²
Na ₂ O,K ₂ O:	0.5-4%	LOI :	2% max
C:	0.01-2%	Moisture :	0.5% max
TiO ₂ :	0.5-2%	Oil Absorption :	16-18g oil/100g
		Melting Point :	1700 °C
		Thermal Conductivity :	0.10 W/mK
		Color :	Grey
		Shape :	Spherical
		PH in Water :	6-8
		Dielectric Constant :	2.0

Typical Particle Size Distribution

425 Micron Grade	
Passing 425 Micron	99-100%
300 Micron Grade	
Passing 300 Micron	99-100%

Photo:



Packing:

Net 25kgs/Paper-plastic Compounding bag, 20bags/pallet, one 20'Container can load 10Metric tons.